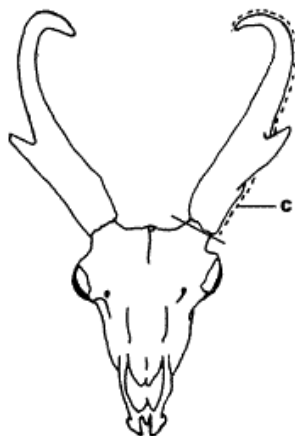


Antelope Horn Length

NGPC will estimate age of pronghorn bucks using horn length. This data will be used in making season recommendations for pronghorn next year. Measure the longest horn to the nearest $\frac{1}{4}$ inch (a flexible $\frac{1}{4}$ inch tape works best). Is the longest horn **More or Less than 9.5 inches**? Most bucks range from 5 - 15 inches.

Length of Horn: Measure on the **outside curve** of the horn as shown on line C from the tip of the horn to the lowest edge of the horn base.



Measure along line C. Record length to nearest $\frac{1}{4}$ inch.

Deer Antler Inside Spread

NGPC will use antler spread to evaluate age and size of bucks. This data will be used in making season recommendations next year. Is inside spread **More or Less than 11 inches**? Standard office paper is 11 inches long. Do not provide measurements on animals with broken main beams.

Inside Spread of main beams: Measure at a right angle to the center line of the skull as shown on line D at the widest point **between the main beams**.

